

NTUSU RESEARCH & POLICY COMMITTEE



WHAT DO WE DO?

RPC, the Research & Policy Committee, is a vital NTUSU division dedicated to enhancing campus life across six pillars: Transportation, Healthcare, Sustainability, Housing, Academics, and Empowerment. As committed analysts, RPC gathers student feedback to create actionable policies and initiatives like U-Walk and U-Feedback. Collaborating with the Vice President (Policy), RPC presents solutions addressing student concerns to university offices, ensuring an improved campus experience.

RPC

KEY INITIATIVES

TELL US ABOUT ICC

19 Nov - 2 Dec

We heard you during U-Walk. Took an ICC module this semester? Let us know about what YOU think about ICC Modules!

url.com/ntusuicc

NS **ntusu**

ICC Survey

ntusu

VOICE • SERVICE • VIBRANCY

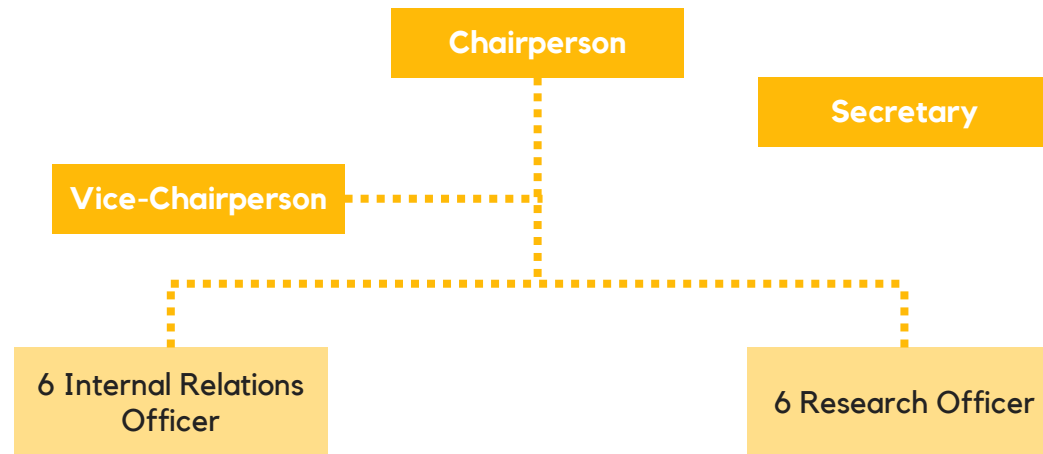
U-Feedback

Leave a Suggestion press Enter

U-Feedback



HOW WE WORK



ROLES & RESPONSIBILITIES

Chairperson

- Lead and oversee RPC operations as Chairperson.
- Drive impactful campus change through collaboration and communication.
- Develop policies aligned with NTUSU's vision.
- Collaborate with VP (Policy), Executives, members, stakeholders.
- Foster cohesive team dynamic for RPC success.

Vice-Chairperson

- Assist the Chairperson in leading and advancing RPC objectives.
- Support oversight of RPC operations, collaboration, and communication.
- Aid in policy development within the committee.

Secretary

- Oversee administrative tasks for RPC as Secretary.
- Manage financial claims and logistics for events and surveys.
- Maintain crucial documentation for meetings, events, and surveys.
- Track attendance and enforce punctuality and discipline.
- Utilize organizational skills and attention to detail effectively.

ROLES & RESPONSIBILITIES

Policy Relations Officer

- Manage and optimize student feedback channels as Internal Relations Officer.
- Ensure effective communication and provide policy updates.
- Engage with students through U-Feedback and other platforms.
- Develop guides and FAQs on various topics including hall allocation and course registration.
- Collaborate closely with a Policy Executive for enhanced exposure.
- Explore rotation across functions for learning within Policy Division.

Policy Relations Officer

- Gather and analyze data for evidence-based policy development as a Research Officer.
- Collaborate with constituent clubs to expand survey reach and depth.
- Utilize tools like Excel and R for data analysis and trend identification.
- Maintain internal databases for cross-year comparison and analytical skills development.
- Execute and coordinate the U-Walk initiative to enhance data collection.
- Collaborate closely with a Policy Executive and rotate across functions for exposure.

FREQUENTLY ASKED QNS

What skills and qualities are you looking out for?

We are looking out for people with the heart to drive change. The Policy Relations Officers and Research Officers work hand in hand with the Policy Executives to advocate for students in their respective fields.

Do you need to be proficient in R/Excel to join RPC?

While technical analytical skills would be preferred, they are not compulsory! As long as you are willing to learn, our committee members will guide and equip you with the necessary skills to perform your roles proficiently.

Do I need to have prerequisite knowledge of University Policies?

No. There will be equipping sessions to keep you updated with the latest University Policies.

Is life in RPC repetitive?

RPC is a dynamic and fast-moving committee that works to solve various problems and issues on campus. You will be exposed to a wide-range of problems and will apply analytical and problem-solving skills to improve the university experience for all students.