



NTUSU STUDENT INTEGRATION COMMITTEE



WHAT DO WE DO?

The Student Integration Committee (SIC) serves as the key support mechanism to ease the transition for international students, and seeks to celebrate the rich cultural diversity within NTU. Through our events and initiatives, we seek to foster meaningful bonds, create a fully inclusive environment and promote a sense of belonging to curate a respectful campus space.

Some of our events are:

- Confluence: An Annual Cultural Festival
- Integration Night
- Winter Workshops
- Adjustment Program

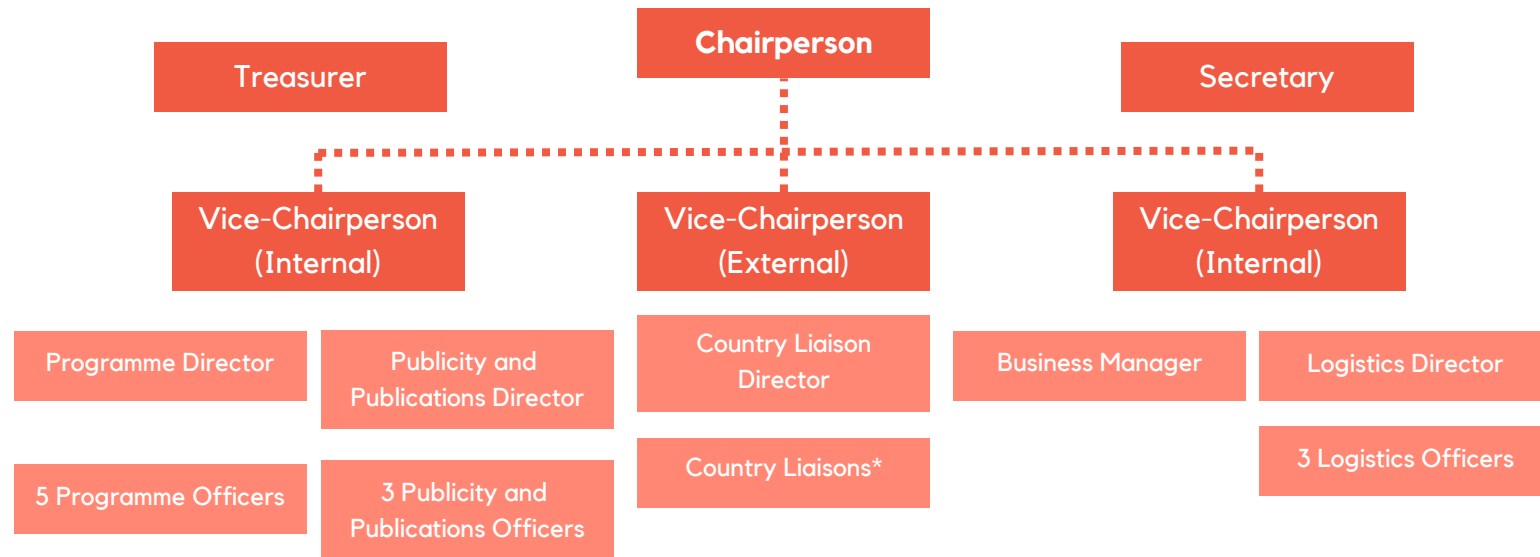
SIC

KEY EVENTS



HOW WE WORK

**Not hiring for the positions of Country Liaisons and Integration Ambassadors*



ROLES & RESPONSIBILITIES (LEAD COMMITTEE)

Chairperson

- **Leads the committee** to plan and execute activities at the direction of the exco-in-charge

Treasurer

- Locate and manage **finances** of the committee

Vice Chairperson (Liasons)

- Focuses on the liaising, integration and management of **country liaisons and integration ambassadors**

Secretary

- Prepare meeting minutes, provide **administrative support**

Vice Chairperson (Events)

- Looks into the **events and initiatives**, provides guidance and manages directors

Vice Chairperson (Business)

ROLES & RESPONSIBILITIES

Programme Director

- **Supervise programmers** to ensure project objectives are met to the vision and standard set by lead members

Publicity & Publication Director

- Manage Publicity & Publications officers to ensure standard of **marketing collaterals**; and liaison with SU Communications

Logistic Director

- **Supervise logistic officers** to acquire and store all necessary items required for project

Business Manager

Programme Officer

- In charge of planning and execution of all **events and projects**

Publicity & Publication Officer

- To be responsible for **visual documentation and design** for SIC event collaterals including photography and videography

Logistic Officer

- Work closely with programmers to ensure that all **logistics** required for the event are purchased, stored and available on time

FREQUENTLY ASKED QNS

Do I have to be an international student to join?

No! At SIC, we embrace diversity and take pride in having a great mix of both local and international students in our committee!

How frequent are SIC meetings?

SIC meetings are bi-weekly, with portfolio meetings happening weekly to keep everyone in the loop. As major event dates get closer, meetings will get more frequent in the year.

Do I need prior experience to join?

You don't necessarily have to have relevant experience, but you have to be passionate and open to contributing to the collective cause of the committee. :)