

NTUSU WELFARE INITIATIVES COMMITTEE



WHAT DO WE DO?

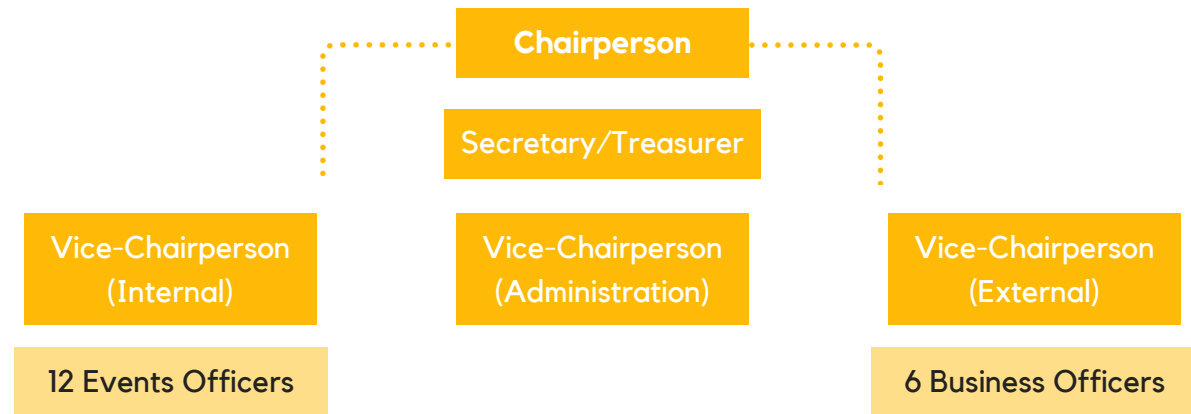
As students, we know that life is stressful. The Welfare Initiatives Committee (WIC) serves the student body by providing them with moral support through our welfare initiatives, such as our U-Study events. WIC also hopes to raise awareness for students to take care of their own wellbeing.

WIC

KEY EVENTS



HOW WE WORK



Chairperson

- **Oversee all matters** pertaining to WIC including the planning and execution of all WIC's initiatives/events
- Works closely with the Vice-Chairpersons and Deputy Student Activities Executive (EXCO) towards the goal of providing welfare to the students in meaningful ways

Vice-Chairperson (Administration)

- Handles **administration** such as taking meeting minutes, organising meeting dates
- Manages finances of WIC
- Also involved in initiatives/event planning

Vice-Chairperson (Internal)

- Supervise **Events Officers** to ensure that the events meet the objectives and are feasible
- Works closely with the Chairperson and Deputy Student Activities Executive (EXCO)

Vice-Chairperson (External)

- Supervise **Logistics Officers** to ensure that logistics are well-sourced (in terms of quality, price etc.) and all logistics are accounted for
- Works closely with the Chairperson and Deputy Student Activities Executive (EXCO)

ROLES & RESPONSIBILITIES (LEAD COMMITTEE)

FREQUENTLY ASKED QNS

Do I need any experience to join WIC?

No prior experience is needed! All you need is the interest and passion to serve, and the drive to work towards WIC's common objective.

Are WIC's events limited to giveaways only?

Nope! Even though our past events have been mainly giveaways, we also try to include some form of engagement wherever possible, to make our events more meaningful. If you have any potential ideas, come on board and join our Events team where you can share brainstorm ideas with the team!